

FRENCH COUNTRY MASTERPIECE

A Custom Silver Creek Home



OFFERED AT | **\$2,395,000**

2660 GAYLEY PLACE

Single Family Home
Year Built: 2014
5 Total Bedroom(s)
4.5 Total Bathroom(s)
Approx. 4870 sq. ft.
10' Ceilings
Forced Air Heat & AC

Thermador Pro Appliances
- 48" Range
- 48" Refrigerator
Hardwood & Tile Floors
Spacious Game Room
Vaulted Entry/Family Room
3 Car Garage

Tile Roof
Solar Power
Large Private Lot
Approx. .6649 acre(s)
Fenced Backyard
City Views

Please contact for more information

Jason Kellar
408-427-3747
jkellar@kprimegroup.com
DRE# 01748067

Edward Kellar
408-427-3751
ekellar@kprimegroup.com
DRE# 00351085



See More @
www.2660GayleyPl.com

K PRIME
INVESTMENT GROUP
www.kprimegroup.com

A Prestige Opportunity

- Private custom non tract area on approx. .6649 acre(s) country lot setting
- Unique French Cottage approx. 4,870 sq. ft. 5 bedrooms, with 4.5 bathrooms
- Gorgeous view of Santa Clara Valley lights
- Exceptional Evergreen Schools include Laurelwood Elementary (8), Chaboya Middle School (9) and Evergreen High School (8)

Impressive Exteriors

- Stucco exteriors, with custom stone accents
- Long life roofing by Eagle Roofing Products® Builders Select Ponderosa Concrete tiles style 5671 Village Blend
- Professionally landscaped courtyard
- Milgard® Tuscan dual-glazed, insulated, gas filled, vinyl windows with sun coat max for all windows. Sculptured grids on selected windows. Double hung 2nd floor windows for easy cleaning
- Designer-selected exterior colors
- Complete side and rear yard “good neighbor” fencing
- Three-car garage with 8’ tall 24-gauge steel roll-up door(s), Genie® ½-HP belt drive opener and two remotes.
- High garage ceilings allowing for stacker units.
- Classic Minka Lavery Corona Bronze exterior light fixtures at front entry
- Nine foot soft arch topped double entry doors of impressive steel/glass mixture

Inviting & Warm Interiors

- Soaring 10’ - 1st floor ceilings and 9’ - 2nd floor ceilings, with many custom 1’ Soffits
- Spacious Grand Entry
- Attractive Palazzo Bellagio two-panel interior doors
- French glass doors provide natural interior light and easy access to yard
- Toffee Nut cabinets with self-closing doors and drawers
- 160 LED Can Lighting System throughout
- Central Vacuum System
- Elegant Symphony Oil Rubbed Bronze Chandeliers in the formal entry, dining room and casual dining areas

Gourmet Kitchen

- Granite slab counters in kitchens with gorgeous tile backsplash
- Thermador® Stainless Steel appliances including:
 - 48” 6-burner professional gas range, with 1 large oven and separate convection oven; auto functions heat sensor hood to match
 - 48” 30 cu.ft. refrigerator/freezer, with filtered ice maker and external water and ice dispenser
 - Fully Flush Stainless Steel Panel Emerald 24” - ENERGY STAR® dishwasher
 - Built in Microwave
- Convenient/large pantry storage
- Attractive and easy-to-maintain tile floors in kitchen, laundry and baths
- Country style spacious dual-compartment sink with garbage disposal
- Moen® Brantford one handle high arch pull-down faucet, oil rubbed bronze
- Moen® Pot filler two-handle kitchen faucet, oil rubbed bronze over stove top
- Refrigerator space pre-plumbed for ice maker
- Butler Pantry, with 50-Bottle Stainless Steel Built-In Wine Cooler

Master Suite

- 2 spacious walk-in closets in master bedroom
- Spacious shower, with Kohler® Devonshire luxury performance showering package, oil rubbed bronze faucets
- Cultured marble countertops on custom raised dual vanities, with Kohler® Devonshire two-handle widespread faucets, oil rubbed bronze
- Kohler® Mariposa bathtub, with Whirlpool Jets and built-in heater
- View of city lights

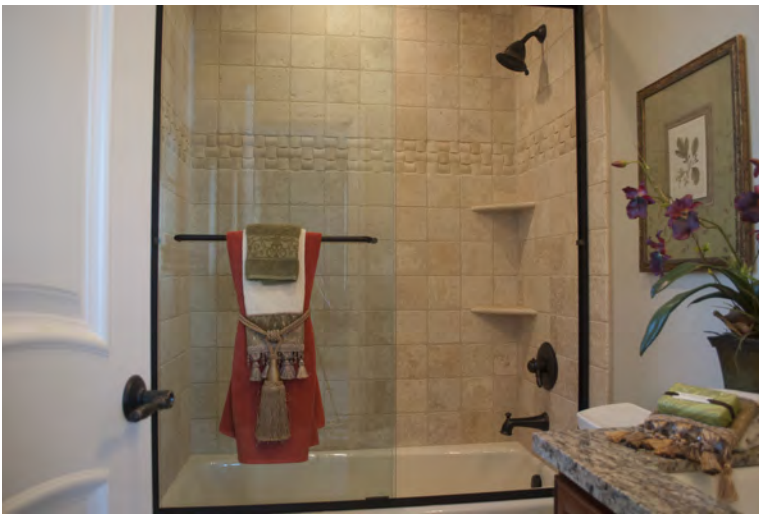
Secondary Baths

- Furniture cabinet sink in powder room
- Porcelain vanity counter with wainscot tile walls behind vanity for powder room
- Toffee Nut cabinets and cultured marble tops for all bathrooms

Home Comfort, Convenience & Green Energy Efficiency

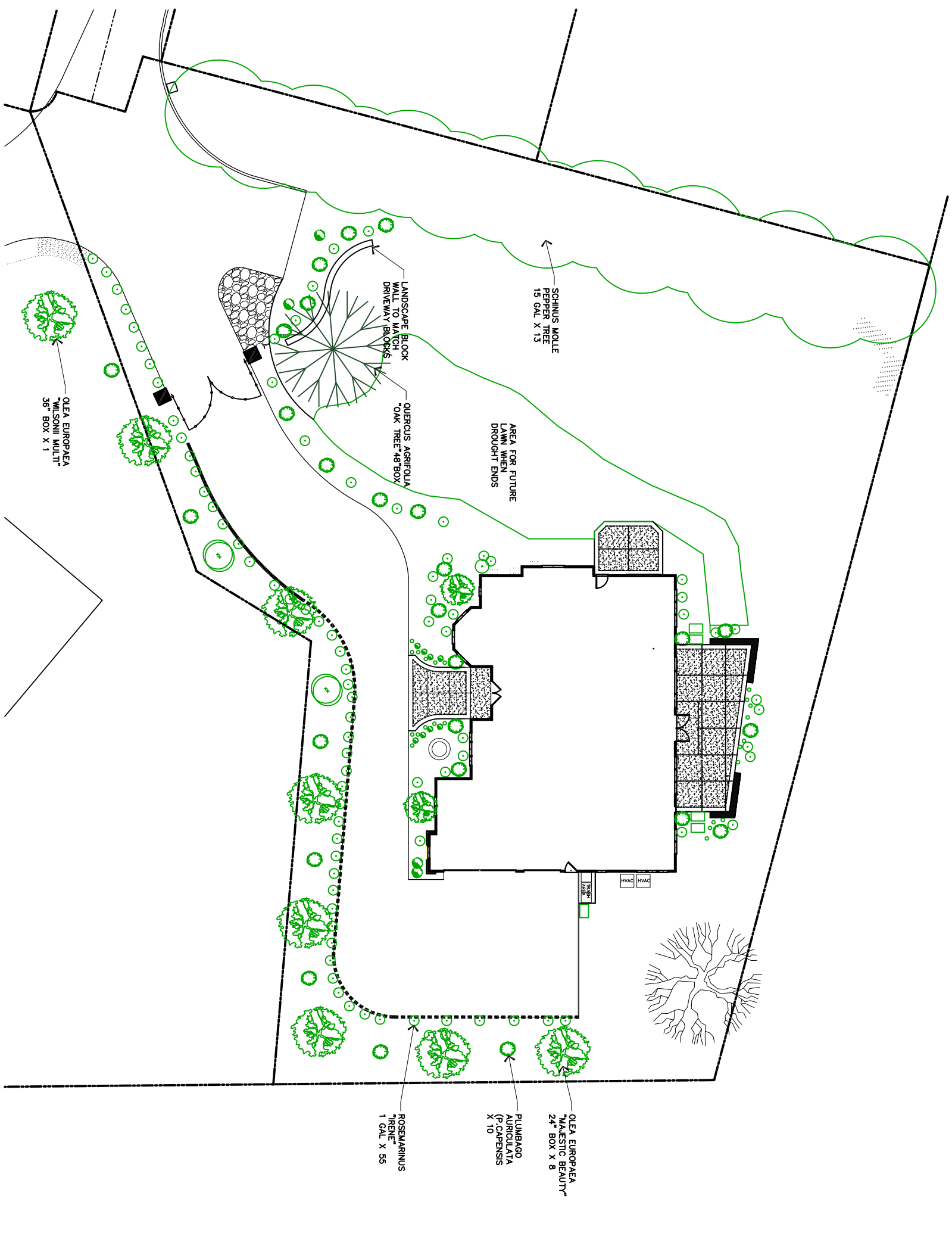
- Two forced-air HVAC units by Bryant®;
- Fully R-13 insulated exterior walls/R30 attic. Total sound insulation package that includes R13 sound at all bedroom and bathroom interior walls and sound insulation between 2nd floor framing and ceiling over living areas
- Solar System installation by ©SolarCity
- Low-flow showerheads, faucets, and dual-flush toilets
- Hard-wired smoke detectors with battery backup and CO2 monitors
- BEHR® & Benjamin Moore® paint low or zero VOC paint
- Multiple fixed Velux® skylights in great room and each bathroom
- Velux® solar operable skylight with remote control for easy controlling/auto ventilation programs
- Whole house filtration system by Aqua-Pure® that will remove particulates down to 5 microns
- Meets or exceeds all applicable title 24 California energy code standards
- Noncombustible exterior plaster and roofing materials
- Tankless Water Heater including re-circulating pump, looped hot water system and insulated hot water pipes
- Energy Star® appliances and light fixtures
- Catse network and TV/cable wiring





See More @
www.2660GayleyPl.com





SCHINUS MOLLE
 PEPPER TREE
 15 GAL X 13

LANDSCAPE BLOCK
 WALL TO MATCH
 DRIVEWAY BLOCKS
 QUERCUS AGRIFOLIA
 "OAK TREE" 48" BOX

AREA FOR FUTURE
 LAWN WHEN
 DROUGHT ENDS

OLEA EUROPAEA
 "WILSONI MULLI"
 36" BOX X 1

HVAC HVAC

OLEA EUROPAEA
 "MAJESTIC BEAUTY"
 24" BOX X 8

PLUMBAGO
 AURICULATA
 (P. CAPENSIS)
 X 10

ROSEMARINUS
 "RENE"
 1" GAL X 55

